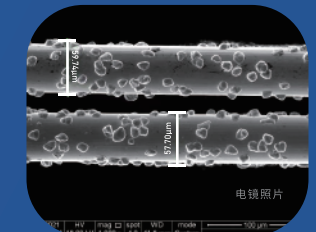
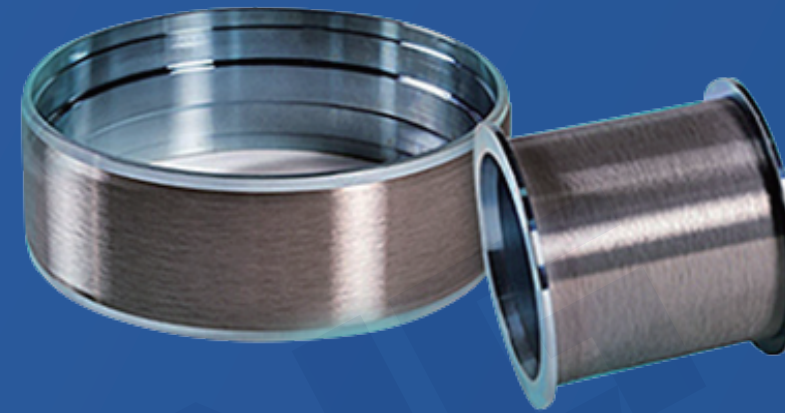


DIAMOND WIRE

金刚线

本产品主要用于单晶硅棒或多晶硅锭的切方硅片的切片，蓝宝石晶棒开方、切片;软磁石或铁素体磁石等磁性材料、碳化硅及其他难切材料各种基板、水晶切片与切割。

This product is mainly used for cutting monocrystalline silicon rods or polysilicon ingots, sapphire rods, neodymium magnets or ferrite magnets and other magnetic materials, silicon carbide and other difficult-to-cut materials, as well as various substrates or crystals.



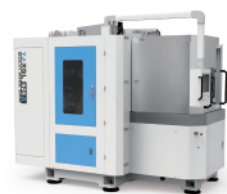
设备特点

- 金刚线生产设备和复绕机具有自主知识产权，设备自己制作不对外销售;
- 设备自动化程度高，自动化镀液管理系统和自动化视觉检测装置的应用，能满足超细金刚线的生产需求;
- 采用自主电镀技术,质量稳定,一致性高,金刚石颗粒采用定制方式，切割能力强，综合线耗低;
- 金刚线断裂强度高且稳定，金刚石颗粒分布均匀无团聚，金刚石直径均匀，镀层结合力强，无起皮及裂纹，镀层致密光滑;
- 切割工艺适用性强，产品可定制性高。

MAIN TECHNICAL FEATURES

- The production machine which is designed by ourselves with independent intellectual property rights. Stable servo system is equipped.
- High degree of automation and the application of automatic plating bath management system and automatic visual inspection device can meet the production needs of ultra-fine diamond wire.
- The fracture strength of diamond wire is high and stable, and the distribution of diamond particles is uniform.
- No agglomeration, uniform diameter of diamond, strong adhesion of coating, no peeling and crack, compact and smooth coating.
- The product can be customized to be compatible to all kinds of cutting process requirements.

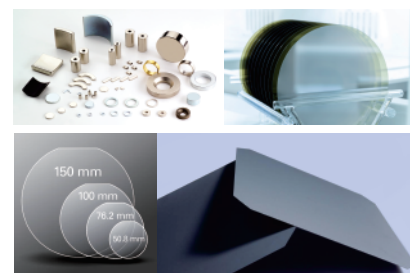
磁性材料切割
YJ-XQL925A



蓝宝石/碳化硅切割
YJ-XQB816系列



单/多晶硅切割
YJ-XQL921系列



产品规格 SPECS

应用领域 Application field	产品规格 Specs(μm)	母线规格 Core wire(μm)	产品线径 Wire diameter(μm)	破断力 Breaking force(μm)	金刚砂微粉粒度 Diamond powder particle size(μm)
磁性材料 Magnetic material	120	90	115-125	≥28	10-20
	145	100	135+155	≥30	20-30
	150	105	150-175	≥33	20-30
	170	120	160-180	≥40	20-30
	200	140	190-210	≥53	30-40
	220	160	210-230	≥70	30-50
蓝宝石/碳化硅 Sapphire /Silicon carbide	140	100	140-150	≥30	20-30
	175	120	170-185	≥41	25-35
	200	135	195-215	≥55	30-40
	250	175	240-260	≥75	30-40
单/多晶硅 Monocrystalline / polysilicon	28钨丝	28±2	44±2	≥6.2	5-10
	32	32±2	47±2	≥6.1	5-10
	33	33±2	48±2	≥6.1	5-10
	35	35±2	50±2	≥6.6	5-10
	38	38±2	53±2	≥7.4	6-12
	46	46±2	59±2	≥9.1	6-12
	53	53±2	69±2	≥11.5	6-12
	55	55±2	70±2	≥12.5	6-12
	57	57±2	72±2	≥13.2	6-12